



## ADVABOND STONE FIX (GREY & WHITE)



### Product Description

A polymer modified cementitious adhesive design with slip resistance characteristics and high tensile adhesion strength to fix most types of natural stone, ceramic tiles, ceramic, vitrified tiles and mosaics. AdvaBond/stone fix is an improved cementitious based adhesive with high performance in interior and exterior use for wall & floor application. Advabond/stone fix in compliance with the requirement of ANSI A118.4 specification.

### Features and benefits

- Excellent adhesive to fix natural stone, porcelain, mosaics and ceramic tiles (Glazed & Non-glazed).
- Water resistant adhesive suitable for wet areas.
- Suitable for interior and exterior application.
- Thin and medium thick bed adhesive up to 10 mm on the floor application.
- High tensile adhesion strength & high initial grab. properties
- Suitable for wall and floor applications
- Low VOC & Pre-blended product ready to use

### Product properties

Appearance	Grey & white
Water of consistency	23-24 % (Grey & White)
Open time	20 minutes
Pot life	3-4 hours
Wet Density	1.7 g/cm <sup>3</sup>
pH of mix	≥ 12
Grouting	After 24 hours/ on floor After 10 hours/ on wall
Time to light traffic	After 24 hours

### Application Instruction

#### 1. Substrate preparation

Adva-Bond/stone fix can be applied on clean, level, load-bearing, and compacted substrates, free of any substance that reduce adherence such as grease, paint coating, oil, dust, bitumen, and other loose materials.

#### 2. Mixing

Add the Adva-Bond/stone fix powder to water (Approx. 4.5 L) in a clean container, whilst stirring and mixing thoroughly to give a slump-free, easily worked mortar. Let the mix rest for 1 min then remix again before using.

#### 3. Application

Apply the mixed mortar paste with a suitable notched trowel with 45 degrees by wet-on-wet technique over the substrate and spread not more than 1 sqm at a time, or enough to enable tiling to be completed within the open time of the adhesive.

Comb the adhesive to the required depth and fix the tile or stone. Place the tiles or stone during the open time of adhesive and press firmly into the position with a slight twisting action, checking periodically that a good adhesion is maintained with the back of each tile. Remove and dispose any unworkable paste. Fresh excess mortar can be removed with water.

### Limitation

Don't allow the product to come in contact directly with any of non-recommended surfaces such as metal, glass, vinyl, aluminum, etc...

### Packing

Plastic bag of 20 kg in Grey & white colors

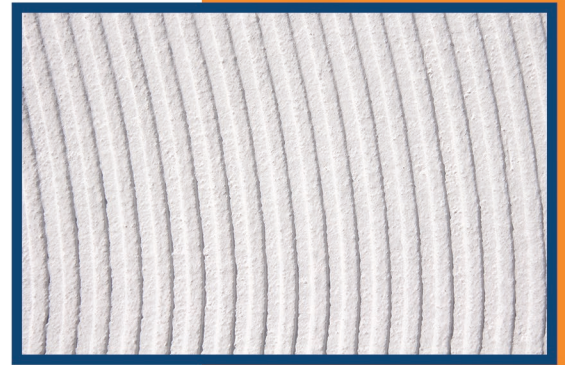
## Technical Data

Type	Grey & White powder mixture
Powder Bulk density	Approximately 1.3-1.4 kg/liter
Density of fresh mortar	Approximately 1.7-1.80 kg/liter
Initial Setting time	In the range of 8-10 hours
Final Setting time	In the range of 18 hours
Compressive Strength	Approximately 15 N/mm <sup>2</sup>
Slip Resistance	less than 0.5mm
Tensile Adhesion Strength:	Greater than 1.00 N/mm <sup>2</sup>
Shear strength, impervious ceramic (Porcelain)	Greater than 1.00 N/mm <sup>2</sup> under all test conditions



## Technical recommendation

- Concrete moisture content should be within 3 %.
- Cement-based plasters, moisture residues in the range of 1.5 %
- Absorbent substrate and gypsum board shall be primed with a suitable primer from the Adva-latex range and left to completely dry before the installation process.
- Substrates should not be subject to any mechanical movement that affect the adhesion
- For improvement in the overall properties of the bonding strength, water resistance, and flexibility performance. Adva-latex liquid can be mixed with the water required for one bag e.g. (3.5 liters of water mixed with 1.0 liter of Adva-latex).
- For the installation of a fully vitrified tile especially the Porcelain tile, Back buttering is highly recommended.



## Storage And Shelf Life

AdvaBond has a shelf life of 12 months in sealed / unopen bags when stored in dry area and standard storage conditions.

Advamix LLC will not be responsible for any misuse or incorrect application procedures or using the product over non-recommended surfaces. Advamix's technical team is ready to provide technical support and assistance regarding the application procedures and area of applications. Please contact Advamix for more information & details



Advamix LLC, Address: Corner No. 1, Plot 0865, Al Jurf Industrial Zone 2, Ajman, UAE.

Tel: +971 562041334, +971 561074277

Email: [info@advamix.com](mailto:info@advamix.com), Website: [Advamix.com](http://Advamix.com)